

PARKS OF DUTCHTOWN

INSIDE THIS ISSUE:

<i>New Pool Access</i>	1
<i>Article - Flowers Blooming</i>	2
<i>May Work Day</i>	2
<i>May Social</i>	3
<i>Activities for summer</i>	3
<i>Board of Directors</i>	4

Monthly Sponsors

We would like to offer the availability to advertise business' owned by Parks of Dutchtown residents (or the business' you work for..) . You can "sponsor" the newsletter for \$75.00 and we can have up to 4 sponsors per newsletter. The \$75.00 per spot will be used for the printing of the newsletter and for social events held in the subdivision for our homeowners. Please let me know as soon as possible if you would like to advertise. Spots will be filled on a first come first serve basis.

New Pool Access

The pool access system uses RFID tagged wrist bands that were issued to each individual resident in the subdivision that requested them. These wrist bands are unique to each resident. The wrist bands will activate locks on the main access gate to the pool pavilion and will activate electronic locks on the bathrooms. To use the wrist band you will simply pass it over the access pad next the gate at the pool or the door to the bathroom. Each wrist band is issued uniquely to an individual. *Only people with wrist bands will be allowed into the pool area.* Anyone without a wrist band will be considered trespassing. If you forgot your wristband that is not an excuse, go home and get it. If you lost

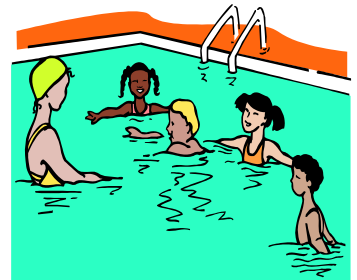
it you may purchase a replacement from the HOA Board at a cost of \$25. *If you are seen allowing people thru the gate that don't have wrist bands you will lose your pool privileges.* This is serious as trespassers are a large liability to the subdivision if they are injured.

Pool rules will remain the same. The pool will automatically lock beyond normal pool hours so the wrist bands will not work after the hours of 9 pm nor before 7am. Residents under the age of 15 must be accompanied by an adult. An adult must scan 10 seconds or less before the resident below the age of 15. Also each resident must scan their wrist band

at the gate otherwise access to the bathrooms will not work.

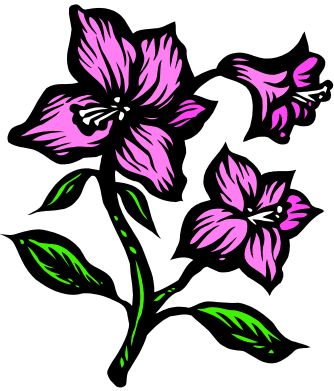
Remember, only people with wristbands are allowed at the pool. Individuals found tampering with the locks, propping the door open, or found letting in people without wrist bands or allowing children in the pool area under 15 without the supervision of an adult will lose their pool privileges.

Please email Brian Carey, at director@parksofdutchtownhoa.com if you need a bracelet. A fee may apply unless you are a new resident.



Brian Carey, and they can email director@parksofdutchtownhoa.com but a fee may apply since they missed the deadline unless ofcourse they are a new resident

FiberEdge™ by EATEL®
 TV • INTERNET • PHONE
 621-4300 eatel.com



Help keep your yard and our neighborhood looking fantastic. With a little work, we all can have a green thumb.

HOW TO KEEP YOUR FLOWERS BLOOMING

Spring time has finally arrived! With the warm weather come beautiful flowers and green lawns. We all know that landscaping is hard work and expensive. It is important to protect your investment by following a simple maintenance schedule for your plants and lawns. Here is an easy program to follow to maintain your landscape year round:

February/March

- A. Use a slow release tree and shrub fertilizer.
- B. Apply AMAZE to existing and new flower beds.
- C. Use Ironite to correct yellowing

D. Mulch all beds once a year.

E. Use "Weed & Feed" on your lawn.

F. Fertilize with Miracle - Grow all flowering annuals.

March/April

G. Apply "Azalea, Camellia, and Gardenia" food.

May

H. Apply "Lawn food plus Iron" to green up lawns.

I. Repeat steps A, B, C, F,

August/September

J. Repeat steps A, B, C, F, G

November

K. Apply winterizer on your

lawn & repeat step B

Watering

It is so important to implement a regular watering schedule. You will be rewarded with a beautiful, flowering landscape.

April - October: water deeply every day for 2 weeks for newly planted gardens.

November - March: water deeply 3 times per week for newly planted gardens.

Adjust for rainfall.



Work will begin at the pool house at 8AM - Please help us keep our neighborhood looking great!!

COMMUNITY WORK DAY

It's spring again and it's time for our annual community work day. **This community work day is planned to last from 8am to 5pm on Saturday May 15th.**

This year we will do some touchup painting at the pool, pressure washing of the parking lot and fences, repair wooden fence at pool, plant new trees around the pool, replace shrubs that died in the past year at various locations, apply weed and

feed to the common areas (except lakes). There is plenty to do this year and something for everyone to help with so please make plans to help keep your neighborhood looking great.

Work will commence at the pool house at 8am. Bring work gloves and wear clothes you don't mind getting dirty or getting paint on.

We should finish every-

thing by 5pm, but make plans to stay for our first monthly social of the year!



"Serving Baton Rouge and its neighbors for over 20 years."

The Bug Man Professional Pest Control

1946 Wooddale Blvd., Baton Rouge, LA 70806 (225) 923-2847 Fax: (225) 923-3644

HAMBURGER SOCIAL



The first monthly social of the year will be held at the pool immediately following the community wide work day for the neighborhood. So plan on working hard at the community work day, then prepare to enjoy your hard work with your neighbors at the pool. Fresh grilled hamburgers will be supplied, please provide your own beverages (remember no glass bottles).



Hamburgers and great neighbors 5pm May 15th

We are encouraging **COMMUNITY INVOLVEMENT !** Come out and meet your neighbors. We are open to any suggestions for community events.



SCHOOL'S ALMOST OUT!

Once school lets out what is there to do besides sit in front of the TV? There are several places to go including those with an educational focus. A list of these organizations is listed below. Please visit the websites for hours, fees, and any additional information.

gallery and a planetarium. www.LASM.ORG

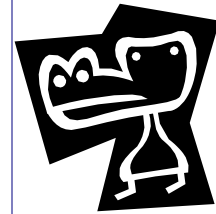
Blue Bayou Waterpark is located off of Highlard Road in Baton Rouge. Season passes are available. www.bluebayou.com

Louisiana Arts & Science Museum in downtown Baton Rouge. It has an art gallery, interactive art and science

Louisiana's old state capitol in downtown Baton Rouge contains a political history museum. **Admission is free!**

Alligator Bayou hosts tours of the Baton Rouge swamp and gives presentations on swamp wildlife (you can even hold a baby alligator and a nutria!) www.alligatorbayou.com

LSU Museum of Natural Science has exhibits of different species of animals and offers self-guided tours. www.lsu.edu (search for museum of natural science on homepage)



Who says summer has to be boring?



SLOW DOWN!



Hopefully you've noticed the Sheriff's patrol around the neighborhood the past few weeks. They are issuing tickets for speeding and failure to stop at stop signs. Many of our neighbors use our streets to walk or run and children play in the yards. Always obey these traffic rules to ensure the safety of our residents!



We're ready for tax season... Are you?

Call Heather Bellanger or Ashley McQuiddy today at 769-8111. Evening appointments in the subdivision are available to our neighbors.

Mark Your Calendars!

Community work day Saturday May 15th at 8AM
Community hamburger social Saturday May 15th at 5PM
HOA meeting Tuesday, May 11th at 7PM at the
Ascension Parish Library on Highway 73 at 7PM. Please join us!!

Board of Directors

<i>President</i>	<i>Auburn Wessman</i>	<i>president@parksofdutchtownhoa.com</i>
<i>Vice President</i>	<i>VACANT POSITION</i>	
<i>Treasurer</i>	<i>Darren Cavalier</i>	<i>treasurer@parksofdutchtownhoa.com</i>
<i>Secretary</i>	<i>Marianne Battaglia</i>	<i>secretary@parksofdutchtownhoa.com</i>
<i>At Large Members</i>	<i>Lance Neal</i>	<i>director@parksofdutchtownhoa.com</i>
	<i>Stanford Scott</i>	<i>director@parksofdutchtownhoa.com</i>
	<i>Brian Carey</i>	<i>director@parksofdutchtownhoa.com</i>
	<i>Benson Bagwell</i>	<i>director@parksofdutchtownhoa.com</i>
	<i>Cheryl Evans</i>	<i>director@parksofdutchtownhoa.com</i>
	<i>Kevin Taylor</i>	<i>director@parksofdutchtownhoa.com</i>
	<i>Constance Callender</i>	<i>director@parksofdutchtownhoa.com</i>
	<i>Andrea Blanchard</i>	<i>director@parksofdutchtownhoa.com</i>

CORPORATE GREEN, LLC
The Landscape Management Firm

We're on the Web !
www.parksofdutchtownhoa.com